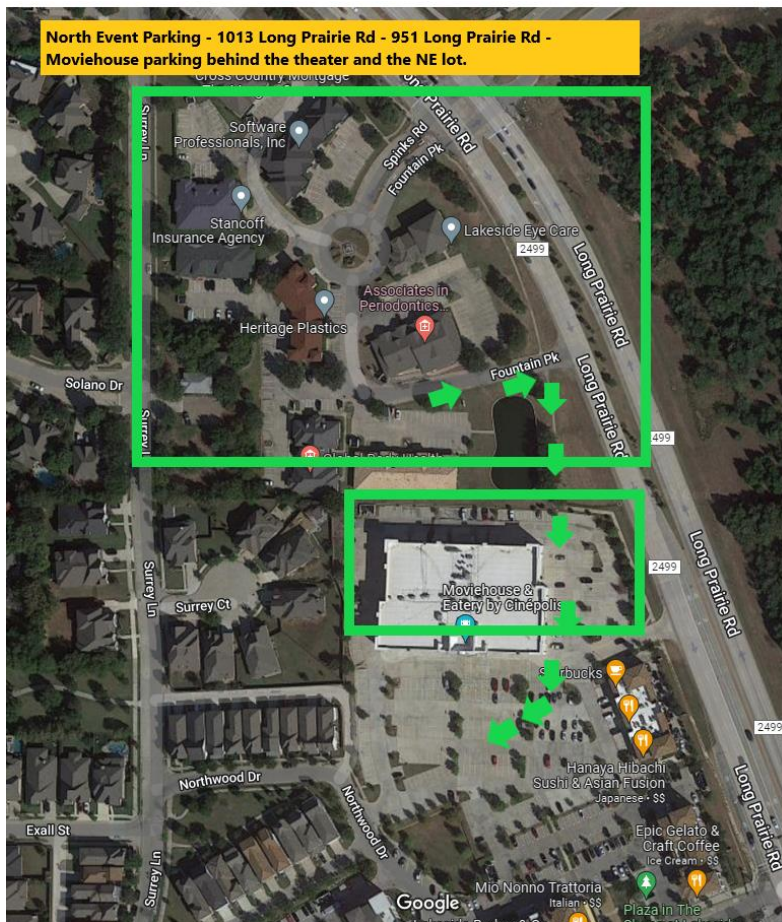




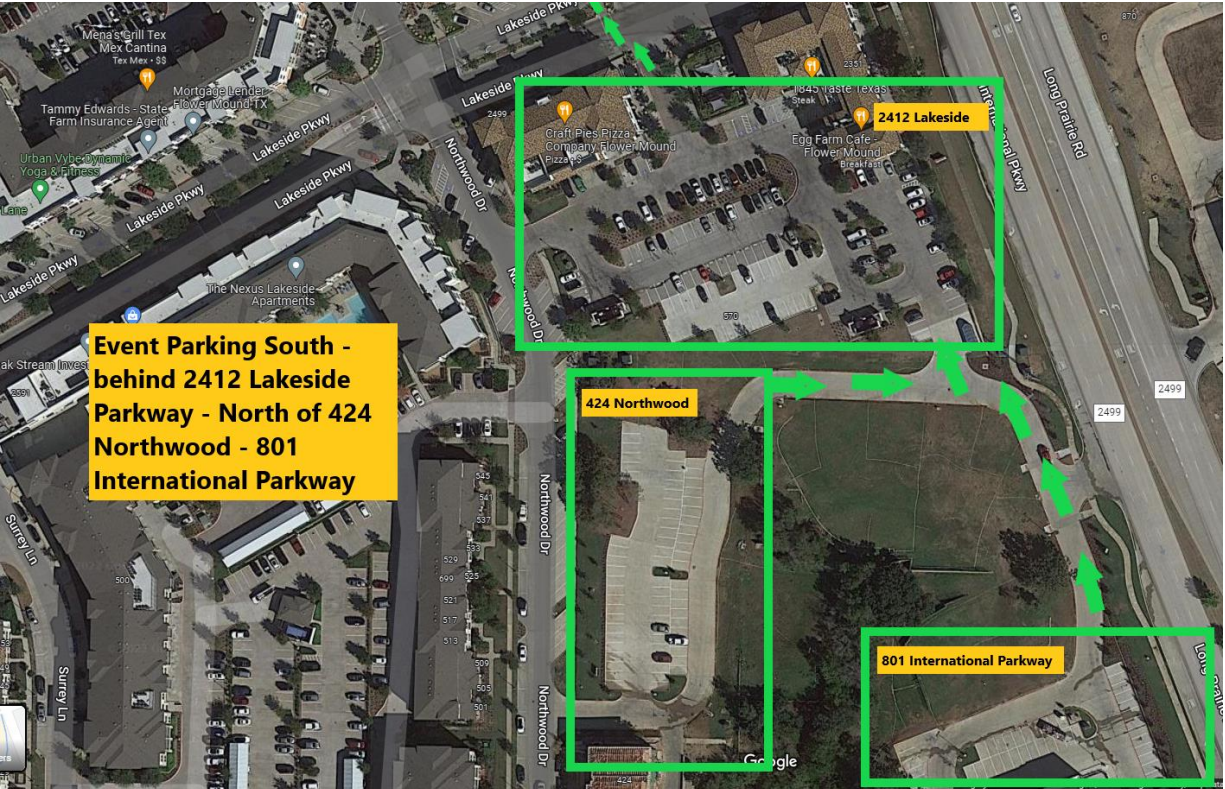
Thank you all for signing up for our Third Annual Bike with the Blue event. Here are some helpful hints and reminders for our 5K participants.

## Where is Parking?

**North Event Parking** will be located at Fountain Business Park, 1005 Long Prairie Rd. Fountain Business Park is located just north of the Moviehouse & Eatery. From Fountain Business Park, it is a very short walk to the event area. Please see the map for further details.



**South Event Parking** will be located in the lot behind the Egg Farm Café, 2412 Lakeside Dr., the lot just north of 424 Northwood and lot located at 801 International Parkway. See the map below for details.



## Where do I pick up my race packet?

Registration is located behind the “Stage” and “Start/Finish” areas. Bib pickup begins at 7:00.



## What time do the events take place?

### Race Day Schedule

- 7 a.m. On Site Registration / Chip Pick-Up
- 8:30 a.m. 5K Run
- 8:30 a.m. Skills/Bike and Helmet Checks/Kid Zone
- 10 a.m. Civilian Bike Race
- 11 a.m. Bike with the Blue Youth Ride
- 11:45 a.m. Police Bike Race

### Refreshments

We will have water stations at the event site and on the course. There will be a snack station directly adjacent to the registration area.

### Safety Hints/Tips

- All Event volunteers will be wearing Yellow BWB shirts. They will be at the event site to aid participants and on the race routes to guide you.
- There will be yard signs with arrows along the race route indicating the route direction.
- **Watch for vehicles pulling out of residential driveways and run on the right side of the roadway.**
- Near the mid-point of the race (Lakeside and Edgemere) there will be a round-a-bout. Once you pass through and enter Lakeside, please stay to the left and follow the cone pattern into the turn lane.